

11 晚 – 奢華南極探險之旅

11 Nights – Expedition Antarctica

Crystal Endeavor (2020 年新船!)



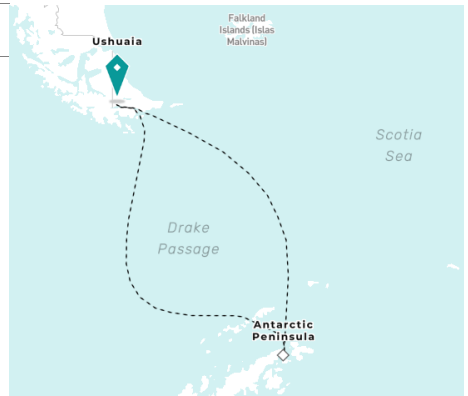
Crystal Endeavor	
總噸位 Gross Tonnage	20,000 tons
首航年份 Inaugural	2020
載客 Passenger	200 人
船員 Crew	200 人
甲板 Decks	10 層

Crystal Endeavor 於 2020 年下水，成為水晶郵輪旗下的第一艘極地遊艇。秉承了水晶郵輪一貫的奢華風格設計、悉心設計的岸上觀光行程以及船員乘客服務比例高達 1:1。船上提供寬敞的公共空間，乘客在享受船上的設施同時，可隨著遊艇穿梭於壯麗的冰川之間，感受令人驚歎的靜謐之美。船上更特設潛水器及直升機，讓旅客用全新角度體驗極地風光及神秘。

啟航日期: 2021 年 11 月 18, 29 日 及 12 月 10 日

HK\$ 124,498 起

日程	停泊港口
1	烏斯懷亞, 阿根廷 – 登船 Ushuaia, Argentina – Embarkation
2	德雷克海峽 Drake Passage
<p>南極半島 Antarctica Peninsula</p> <p>從德雷克海峽進入南極大陸最北端延伸出來的這條 800 英里長的冰山和島嶼，通往的旅人夢想的陸地 - 南極洲。作為南極最容易到達的地方，這裡有標誌性的冰柱形冰川，為您提供令人著迷的景觀；而您也可以一探南極獨有的動物，海豹、海鳥、南極企鵝和巴布亞企鵝等都能在此看到牠們的身影。船上特設的衝鋒艇令您更近距離欣賞這個原始而迷人的地區。</p> <p>3-10 Extending from the northern-most reaches of the Antarctic mainland, this 800-mile-long mountain range of ice and islands jutting into the Weddell Sea on approach to the Drake Passage, is the Antarctica of dreams. The most accessible part of the Great White Continent, here is where iconic tabular icebergs provide mesmerizing vistas, and where seals, seabirds, and chinstrap and Gentoo penguins make their home. Zodiac adventures and landings reveal the wonder of this pristine and captivating region.</p>	
11	德雷克海峽 Drake Passage
12	烏斯懷亞, 阿根廷 – 離船 Ushuaia, Argentina – Disembarkation



* 需要乘坐接駁艇登岸 Tender Required

價目 Price

成人佔半房 Sharing twin basis

Deluxe Suite - Cat. S6

Deluxe Suite - Cat. S3

Penthouse Suite - Cat. PS

11 月 18, 29 日

12 月 10 日

HK\$ 124,498 起

HK\$ 129,198 起

HK\$ 188,898 起

郵輪雜費 HK\$ 4,350 | 以上航程及預計到達/離開時間只供參考，如有更改，恕不另行通知。

11 晚 – 奢華南極探險之旅

11 Nights – Expedition Antarctica

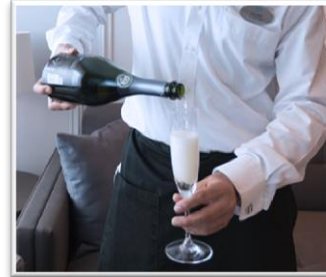
Crystal Endeavor (2020 年新船!)



Crystal Cruises: All-Inclusive Luxury Cruises

秉承了水晶郵輪一貫的奢華風格，提供尊貴的一價全包 All-Inclusive 旅程：

- 船上 1:1 的船員乘客服務比例
- 專屬的 Crystal Butler 專業管家服務
- 船上無限量尊享指定的酒精飲品
- 多達 6 個餐膳選擇
- 指定岸上觀光活動及水上活動
- 船上服務人員小費
- 無線 WIFI 上網服務



船上無限量享用指定酒水



Crystal Butler 專業管家



船上特設潛水艇 (須額外收費)



極地航程中使用衝鋒艇登陸各地

由探險專家帶領的岸上觀光

- 船上配備 25 名探險隊員 Expedition Team，將以小組形式帶領旅客進行各種岸上觀光。
- 極地航程中安排多項 Crystal Expedition Adventures 岸上觀光，使用衝鋒艇登陸各地。
- 極地航程中安排 Crystal Unexpected Adventures 岸上體驗，帶你尋找各種野生動物！
- 船尾特設水上活動平台，及配備了多項水上活動設施，如獨木舟、浮潛用品等。
- 船上特設潛水艇和直升機 (須額外收費)，用全新角度體驗各地風光。

(岸上觀光活動安排及船上設施開放將根據不同航程而有異。)

船上 6 個餐膳體驗 MICHELIN-INSPIRED DINING

- Waterside，由 Crystal's acclaimed culinary team 設計的精緻餐膳
- Umi Uma & Sushi Bar，由日本名廚松久信幸設計的經典日式 Fusion 菜
- Prego & The Vintage Room，傳統意大利菜配合精佳釀
- Bistro Endeavor，經典歐陸式咖啡館
- Marketplace，位於船上玻璃觀境廳 (Two-story solarium) 之中享受輕食
- The Pantry & Room Service，24 小時送餐服務



Marketplace



Waterside



Deluxe Suite with Verandah (28.3m² / 304 ft²)



Penthouse Suite with Verandah (42.5 m² / 457 ft²)



Owner's Suite with Verandah (105 m² / 1,130 ft²)

11 晚 – 奢華南極探險之旅

11 Nights – Expedition Antarctica

Crystal Endeavor (2020 年新船!)



費用包括

- 11 晚遊輪住宿並享用船上美食及娛樂設施
- 船上服務人員小費
- 旅遊業議會 0.15%印花稅

費用不包括:

- 郵輪雜費、港口稅、季節性附加費、旅行社服務費
- 需付費岸上觀光、需付費食品及飲品、船員小費、遊輪燃油附加費(如適用)、船上指定保險費(如適用)
- 護照簽發 / 簽證費用、旅遊保險、其他個人消費
- 其他不列於此列之需收費項目

備註

1. 費用以成人二人一房每位計算，並以港幣計算。單人房、三/四人同房或兒童之費用，請與本公司聯絡。
2. 費用按 2019 年 12 月 3 日之價格作參考指引，價格視乎供應情況並繳付訂金時為準。
3. 如航空公司或遊輪公司增收燃油附加費、其他應繳稅費，乘客須繳付差額。實際金額以船公司告示發出日期為準。有關金額將於確認後釐定並加到最終的票價。
4. 訂位時需繳付不退還之訂金。餘款必須於訂位確認後 3 個工作日內全數繳付。繳交費用後，恕不可作任何改動。任何姓名或出發日子之改動，將會視作取消行程處理。套票必須於出發前最少 5 個工作日前預訂。
5. 訂位時的乘客姓名全寫必須與旅遊證件上的全名相同，任何修改將會導致失去原來之訂位、失去原來之優惠價及導致修改費用。
6. 套票在任何情況下都不能更改、轉讓或退還款項。
7. 機票及船票可於出發前 3 日內領取。
8. 出發後因迫不得已之理由(如戰爭、政治動盪、天災、疫症、惡劣天氣、交通工具發生技術問題、載運機構臨時更改班次或時間表、罷工和工業行動等)更改項目而增加經營成本，本公司可向顧客徵收額外費用。
9. 如因天氣惡劣、海面狀況或各種未能預知或迫不得已的情況下(如戰爭、政治動盪、天災、疫症、惡劣天氣、交通工具發生技術問題、載運機構臨時更改班次或時間表、罷工和工業行動等)而不能停靠或更改行程，顧客同意及接受船公司或「本公司」不需作出任何補償。
10. 航程中港口啟航/抵達/停靠時間會按航行情況有所調整/更改/取消，以遊輪公司最後安排為準。顧客同意及接受遊輪公司有最終的決定及不會當作違反商品說明條例，亦就此放棄向遊輪公司或「本公司」追討或索償。
11. 乘客需持有回港日期起計不少於 6 個月以上有效護照及入境簽證，本公司對乘客因個人證件所產生之任何問題概不負責。
12. 「香港旅遊業議會」(TIC)建議乘客出發前購買綜合旅遊保險。
13. 以上費用及條款如有任何更改，恕不另行通知。其他條款按本公司「責任及細則」為準，詳情請與本公司職員查詢或瀏覽本公司網頁。
14. 以上優惠及價錢只適用於 2019 年 12 月 3 日或以後報名之新客戶。
15. 船公司將保留以上優惠之最終決定權。

遊輪備註

1. 客人報名時請提供有效旅遊證件之副本。
2. 遊輪上各項收費，均以美元結算，敬請注意。
3. 艙房號碼、層數及位置將於辦理登船手續時由遊輪公司派發，並以遊輪公司之最後安排為準。
4. 遊輪公司亦可在不收取額外費用下提升艙房至較高級別，客人不得異議。
5. 取消行程將按照遊輪公司罰則另將收取行政費用每位每交易計港幣\$500
6. 其他有關遊輪公司之條款及細則，均以遊輪公司英文行程書內之條款及網上刊登之條款為準，請瀏覽網頁 <http://www.crystalcruises.com/>。
7. 本公司及遊輪公司保留權利隨時更改以上條款及細則。若有任何異議，本公司及遊輪公司保留一切最終決定權。
8. 尚有其他艙房及套房級別，詳情請與本公司職員聯絡。

Fares includes:

- 11 nights cruise onboard including accommodation, meals, entertainment & access to facilities.
- Pre-paid gratuities.
- TIC 0.15 % Levy.

Fares EXCLUDED:

- NCCF, Government Fees, Seasonal Surcharge, Travel Agent Service Fee
- Priced Shore Excursions, Priced Food & Beverage items, Gratuities, Cruise Fuel Surcharges (if applicable), Cruise Insurance Premium (if applicable)
- Passport / Travel Visa Fees, Travel Insurance, Any Personal Expenses
- Including, but not limited to, any information relating to policy of Cruise Company.

General Terms & Conditions :

1. Fares quoted are per person in Hong Kong Dollars based on double occupancy. Single/Triple/Quad or Child fare is available on request basis.
2. Fares listed on the flyer are based on quotation as of 03 Dec, 19, it is subject to availability and to be confirmed at the time of a paid reservation.
3. Travel agent reserves the right to collect fuel supplements, applicable taxes which imposed by the carrier, even full payment has been made to the reservation. Fare difference is governed by official notification from cruise line. These amounts will be determined upon your confirmation of booking and will be added to the final fare.
4. Non-refundable deposit payment as stated by cruise line is required upon confirmation to secure a booking. Full payment must be made per cruise lines' payment calendar. No change is allowed once payment is made, amendment on names or dates will consider as cancellation. Reservation must be made not less than 5 days before departure.
5. Passengers' full name as shown on travel document is required at the time of booking. Amendment will likely result in fare difference, loss of reservation and / or incurring amendment fees.
6. Package is non-endorsable, non-reroutable and non-refundable.
7. Flight and Cruise documents can be received in 3 days before departure.
8. If a material alteration to a package tour after its commencement for reasons beyond control, the travel agency may impose any additional charge to his clients as a result of an increase in operation costs. ("Reasons beyond control" means hostilities, political unrest, natural disasters, pestilences, bad weather, technical problems to transport, changes to the frequency or timetable of any means of conveyance by its operator without advance notice, strikes, industrial action, etc.)
9. Passengers accept full responsibility for all losses and expenses due to "Reasons beyond control". Cruise company and the travel agency will not be liable for any consequences. ("Reasons beyond control" means hostilities, political unrest, natural disasters, pestilences, bad weather, technical problems to transport, changes to the frequency or timetable of any means of conveyance by its operator without advance notice, strikes, industrial action, etc.)
10. Cruise company reserves the right to change itinerary, timing of all embarkations/disembarkations, and cancel port of calls due to weather conditions or specific reasons. All of the changes will not be considered as against "The Trade Descriptions Ordinance, Chapter 362, Laws of Hong Kong". Passengers shall not make claim against cruise company and the travel agency for any recovery.
11. Passengers' passport validity is required to have at least 6 months prior the return date and valid traveling visa(s) is granted. Travel agency will not be liable for any consequences.
12. HK Travel Industry Council recommends passenger to take out the travel insurance before the journey.
13. The above Terms and Conditions are subject to change without prior notice. Travel agency reserves the rights to alter the terms & conditions and make final decision in case of any disputes.
14. The above fares and promotions are only valid to the reservation that made on or after 03 Dec, 19.
15. In case of disputes, Cruise Company reserves the right to make the final decision.

Cruise Terms & Conditions :

1. Passport copies are required for reservation.
2. Shipboard currency: US Dollars.
3. Stateroom assignment is subject to the cruise company, and on best available basis.
4. Cruise company reserves the right to upgrade a guest or guests to higher category accommodations at no additional cost.
5. Cancellation fee of HK\$500 per person/transaction will be levied on top of cruise line's policy.
6. Other terms and conditions remain the same as laid on <http://www.crystalcruises.com/>
7. Fares and availability for single room, triple/quadruple or child share may available on request basis.
8. Fares of other categories available upon request.

Please call your dedicated travel consultant or Cruise hotline 3151-8887 or

Email: cruise@connexustravel.com for more detail.

Visit our website at www.connexustravel.com